

MONTHLY MEMBERSHIP PROGRESS REPORT

District 105CW

Results as of: 5/31/2020

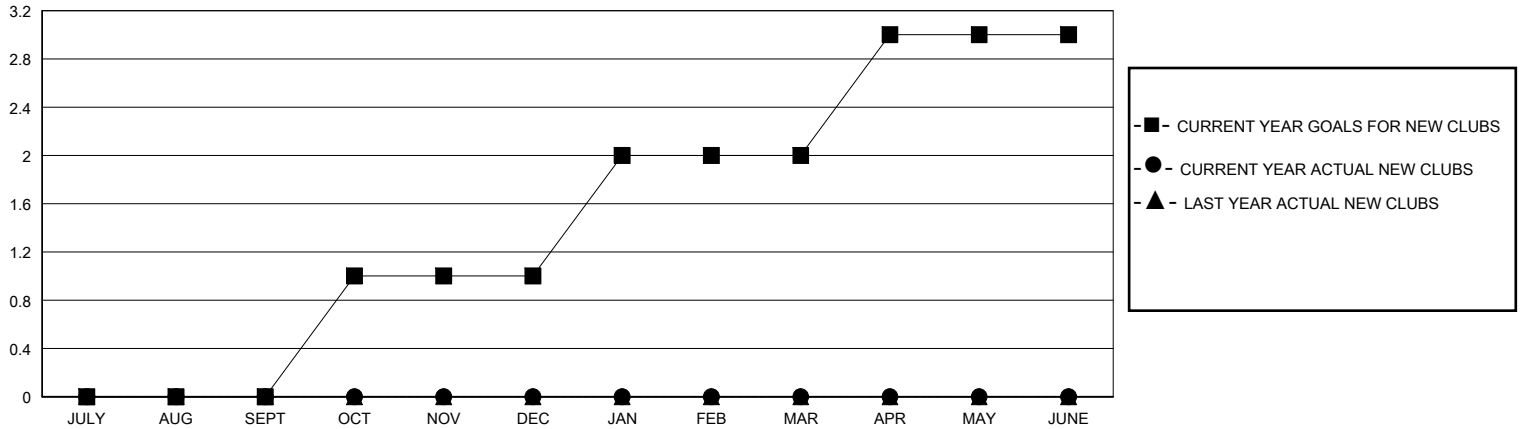
GMT:

LOCATION ENGLAND

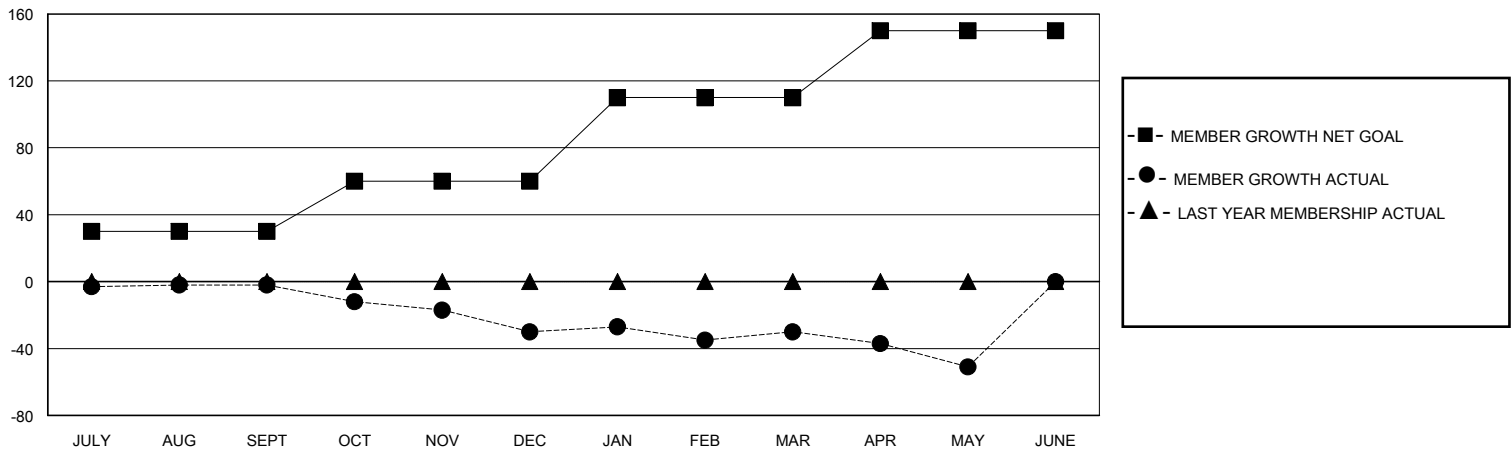
GMT CA

| Clubs | | | | Members | | | |
|-----------------------|---------------|-----------|---------------|-----------------------|------------------------|----------------------|----------------------------------------------|
| RESULTS FOR 2019-2020 | | | | RESULTS FOR 2019-2020 | | | |
| QUARTER | NEW CLUB GOAL | NEW CLUBS | DROPPED CLUBS | QUARTER | MEMBER GROWTH NET GOAL | MEMBER GROWTH ACTUAL | DROPPED MEMBERS ACTUAL (including transfers) |
| JULY/AUG/SEPT | 0 | 0 | 0 | JULY/AUG/SEPT | 30 | 35 | 36 |
| OCT/NOV/DEC | 1 | 0 | 0 | OCT/NOV/DEC | 30 | 36 | 55 |
| JAN/FEB/MAR | 1 | 0 | 0 | JAN/FEB/MAR | 50 | 37 | 36 |
| APR/MAY/JUNE | 1 | 0 | 0 | APR/MAY/JUNE | 40 | 6 | 26 |

GOALS AND ACTUAL NEW CLUBS CUMULATIVE



GOALS AND ACTUAL MEMBERS CUMULATIVE



| | | |
|-------------------------------------------------------------------------------------|-----------------------------------------------------------|--------------------------------------------------------------------------|
| DROPPED CLUBS: 0 | 49 CLUBS OF 91 ADDED 1 OR MORE NEW MEMBERS | GENDER DISTRIBUTION MALE 1,236 (73.88%) FEMALE 437 (26.12%) |
| DROPPED MEMBERS DECEASED 30 CLUB CANCELLED 0 OTHER 123 TOTAL 153 | CLICK HERE FOR CUMULATIVE MEMBERSHIP DATA | TOTAL FAMILY UNIT MEMBERS 192 FAMILY MEMBERS PAYING HALF DUES 97 |